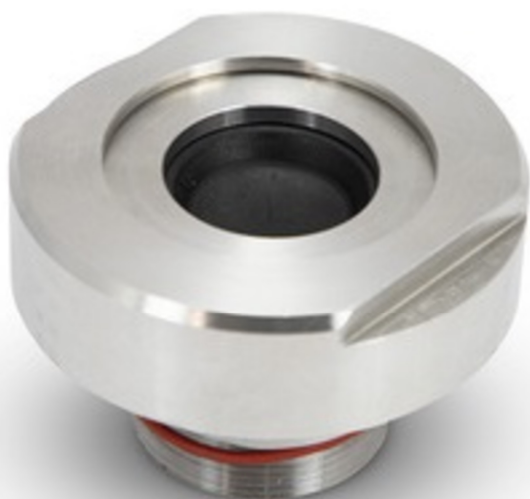


Instructions manual

Dosing nozzle for toothed bottling units



LYSON

Przedsiębiorstwo Pszczelarskie Łysoń

Spółka z o.o.

34-124 Klecza Górna, st.Pszczela 2, Poland

www.lyson.eu, e-mail; lyson@lyson.com.pl

Tel. +48 33/875-99-40, +48 33/870-64-02

The manual covers following devices (codes):

W20403

Table of contents

1. General safety instructions
 - 1.1. Intended use
 - 1.2. Operation safety
2. Instructions of use
3. Product description
4. Instalation instructions
5. Technical specifications
6. Storage
7. Maintenance and cleaning
8. Warranty



Fig.1

1. General safety instructions

Before first use read the manual carefully and follow the instructions contained therein. The manufacturer is not liable for damage caused by equipment used inappropriately or by incorrect handling.

1.1. Intended use

1. This dosing nozzle is designed to prevent the honey from dripping in between the filled jars/bottles. The nozzle is dedicated for bottling machines equipped with toothed gear pumping modules.
2. Before and after use, the equipment should be thoroughly washed with hot water cleaning agents approved for contact with equipment used in the food industry and then rinsed thoroughly with clean water.



1.2. Operation safety

- a) Use the appropriate tools to instal and demount the nozzle!
- b) Do not overtighten the nozzle to the pumping unit flange.
- c) The product is not intended for use by persons (including children) with limited physical, sensory or mental abilities, or by inexperienced users, unless under supervision or with instructions given by an accountable party. This device is not a toy, and shouldn't be used as one. Children should not to play with it.

2. Instructions for use

An additional technical check should be carried out before each honey harvesting season.

Clean thoroughly before use

Install and demount following instructions in section 4.

3. Product description (Fig.1):

1. nozzle body
2. washer 1 mm thick.
3. membrane
4. washer
5. nut



4. Instalation instructions (Fig.2):

Before changing the nozzle, empty the toothed pumping module from the honey, switch off the bottling machine and unplug it.

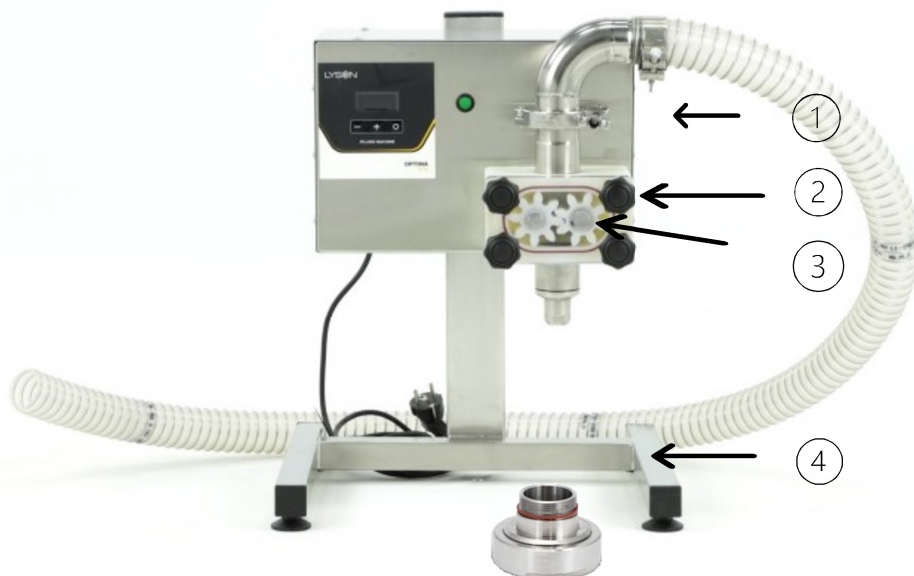
Perform the following steps:

- unscrew the standard nozzle "3" from the flange "2" of the toothed pumping module "1" using spanner size 22,
- using spanner size 60 tighten the dosing nozzle "4" to the flange "3",
- turn the bottling machine on,
- fill the toothed pumping module with honey,
- start bottling the honey.

Fig.2 elements:

1. toothed pumping module
2. nozzle mounting flange
3. standard nozzle
4. „no drip” nozzle

Fig. 2



5. Technical specifications

- 0H18N9 acid resistant stainless-steel
- thread: M38x1,5 compatible with toothed pumping modules
- membrane – synthetic EPDM
- diameter – 72 mm.
- height – 48 mm.
- weight – 0,6 kg.

6. Storage

Clean and dry the product thoroughly after use.
An additional technical check should be carried out periodically, and if any defects are found, please contact the manufacturer.

7. Cleaning and maintenance



IMPORTANT!

Before first use the equipment must be thoroughly cleaned and dried.

Use two spanners to dismantle the dosing nozzle.

Hold the nozzle body with spanner 40 is ("1" Fig.1), and unscrew the nut using spanner 60 ("4" Fig.1).

Clean with hot water using detergents allowed in food industry using a soft cloth.

After cleaning rinse the device and allow it to dry thoroughly.

Store the device in a dry room.

Do not use any chemical agents to protect the product.

8. Warranty

The product purchased from the Lyson Company is covered by a manufacturer's warranty. The warranty period is 24 months from the date of purchase.

All purchased products come with receipts or VAT invoices.

Warranty details at:

www.lyson.com.pl