

MANUAL

Pump for royal jelly 12V , 230V



LYSON

Przedsiębiorstwo Pszczelarskie Tomasz Łyson

Spółka z o.o. Spółka Komandytowa

34-125 Sułkowice, ul. Raclawicka 162, Polska

www.lyson.com.pl, email; lyson@lyson.com.pl

tel. 33/875-99-40, 33/870-64-02

Siedziba Firmy Klecza Dolna 148, 34-124 Klecza Górna

The following manual includes the devices bearing the following codes:

W010 , W011

Manual

1. General safety operational principles.
 - 1.1. Electrical safety.
 - 1.2. Operational safety.
 2. Device characteristics.
- 2.1. Description.
- 2.2. Device technical parameters
3. Preparation the pump for operation.
4. Device storage.
5. Cleaning and maintenance.
6. Recycling.
7. Guarantee.



PUMP FOR ROYAL JELLY

Prior to operating the device please refer to the manual and act according to the guidelines contained therein. The manufacturer cannot be held accountable for the damages cause by misusing the device or its improper handling.

1. General safety operating principles



1.1 Electric safety

- a) The device must be plugged in to the socket with the voltage specified on the product nominal plate (230V or 12V)
- b) Periodically check the power supply cable. If power supply cable gets damaged, it must be replaced. Do not operate the device when the power supply cable is damaged.
- c) In case when the device has got damaged, in order to avoid any danger, it may be repaired by a specialist repair centre or a qualified person solely. It is forbidden to pull the power supply cable. The power supply cable must be kept away from any heat sources, sharp edges and its proper state must be secured.
- d) Prior to connecting the device to the mains, make sure that it is switched off. The switch on the control panel must be in 0 position. Be careful while connecting the device to the mains. Hands must be dry. The floor on which the device is placed must be dry!



1.2. Operational safety

- a) The following device is not intended to be used by persons with limited physical, sensory or mental capabilities (including children) or persons inexperienced or unfamiliar with that type of equipment unless the usage occurs under supervision or in line with the equipment operating manual provided by safety supervising persons
- b) The must be protected against humidity: (also during storage)
- c) Do not operate the device in the vicinity of flammable materials.
- d) It is forbidden to perform any maintenance works when the device is in operation.
- e) It is forbidden to repair the powered device.



2. Device characteristics

The device allows to suck off quickly and effectively the royal jelly from the swarm cell .
Efficiency: approximately 10 ml/min

Royal jelly is produced by wax glands of young worker bees between 5th and 14th day of their lives. Its consistency resembles thick cream, is of white colour with pearl shade. It has a specific, slightly sour taste.

fig.1



fig.2

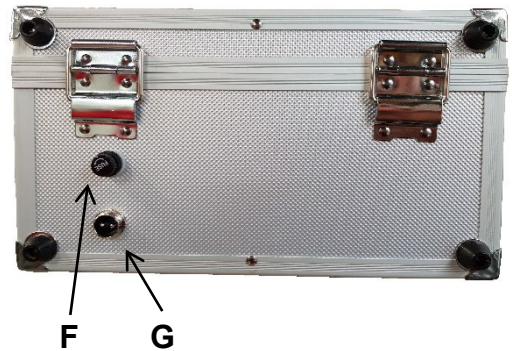
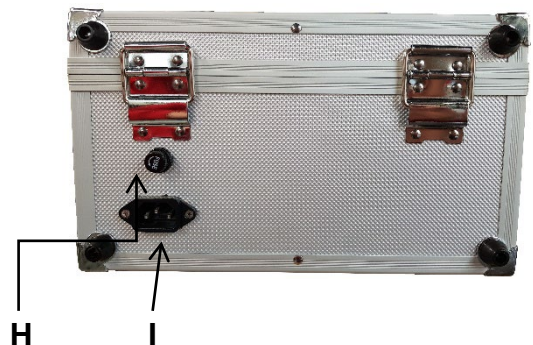


fig.3



2.1. Description:

Fig.1

- A – glass suction nozzle
- B – bottle 100ml.
- C – case
- D – suction hose
- E – power switch 0-1

Fig.2

- F – fuse 2A
- G – power supply socket 12V

Fig.3

- H – fuse 2A
- I – power supply socket 230V

2.2. Device technical parameters

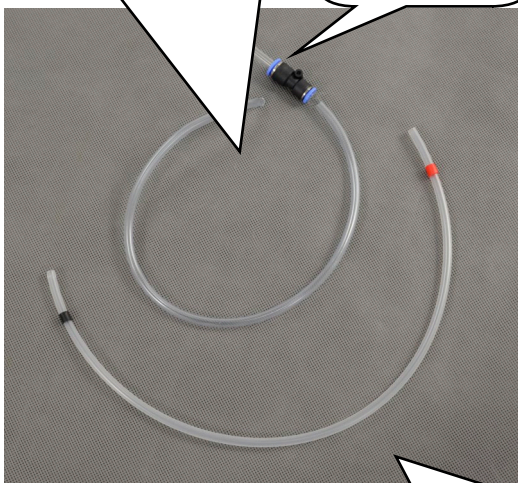
<p>W011 Device to suck off royal jelly 12V Power: 12W Width: 280 mm Length: 270 mm Height: 165 mm Equipment: 5 bottles 100 ml 2 marked hoses Power supply cable 12V glass suction nozzle</p>	<p>W010 Device to suck off royal jelly 230V Power: 12W Width: 280 mm Length: 270 mm Height: 165 mm Equipment: 5 bottles 100 ml 2 marked hoses Power supply cable 230V glass suction nozzle</p>
--	--

3. Preparing the pump for operation

1 . Prepare the marked hoses.

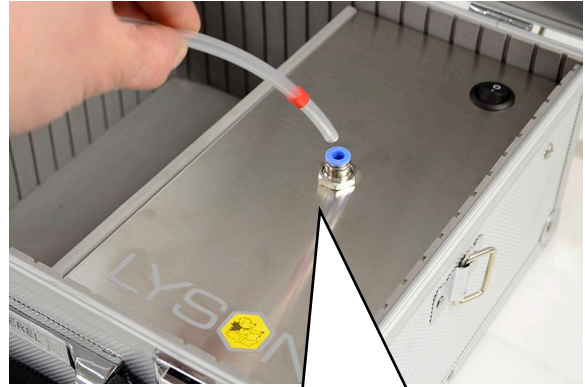
a) soft hose with black marking serves to suck royal jelly. The hose is to be connected to a bottle on one end, the other end is to be connected to a pipette.

c) Glass pipette



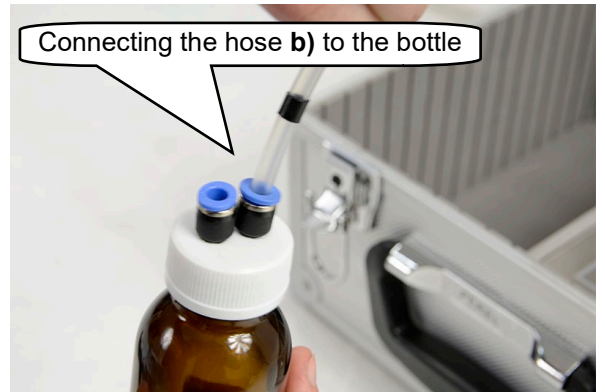
b) hard hose with red and black marking connecting the pump with the bottle

2 . Connect the hard hose **b)**, with the red marking towards the pump orifice.



The place to connect the hard hose **b)**.

3. Next, the other end of the hard hose marked with black to be connected to the bottle



Connecting the hose **b)** to the bottle

4. Connecting the soft hose **a)** to the bottle.



Connecting the soft hose **a)** to the bottle

5. Connecting of the other end of the soft hose a) to a glass pipette.



The terminal by means of which the royal jelly is collected

Worn-out product must be removed as waste only within selective waste collection organised by the Network of Communal Electric and Electronic Waste Collecting Points.

A customer is entitled to return the used equipment to the electrical equipment distributor network, at least free of charge and directly, if the device to be returned is of proper type and serves the same purpose as the newly purchased device

7. Guarantee

Products purchased from "Łyson" company are encompassed by the manufacturer's guarantee.

The guarantee duration equals 24 months

receipt or a VAT invoice is issued for each product purchased

Details on the guarantee, see www.lyson.com.pl

Having connected all elements of the pump, the device is to be connected in line with the power supply type, either to the mains (230V) or to a battery (12V).
Once the operation has terminated, press 0/1 switch to 0 position. Disconnect the device from the power supply.

4. Device storage

Once the operation terminates, the device must be cleaned and dried thoroughly.

The device is to be stored in dry rooms with the temperature above 0° C.

Prior to every season, an additional technical check-up must be performed and if any defects have been detected, contact the service centre.

5. Cleaning and maintenance



IMPORTANT!

Prior to starting the maintenance, the plug must be taken out!

Prior to the first usage, device must be cleaned and dried thoroughly.
The device is to be washed with hot water with the agents admissible to come into contact with the equipment used in food processing added.
The device is to be washed making sure to protect electric components.
After washing, rinse with clean water and dry.

6. Recycling